



Daylight Systems

# Tubular Rooflights





## Daylight Systems

The Natural Choice for Natural Light

When you choose a Mardome tubular rooflight, you choose a superbly engineered rooflight unit designed and manufactured by industry specialists, Brett Martin Daylight Systems, the UK's largest most innovative rooflight company. This means your decision is backed by the security of dealing with an established company with over 50 years industry experience, full technical support from product selection through to installation and complete after-sales back up. That's why Brett Martin Daylight Systems is the natural choice for natural light.



# For a lighter, brighter life



Outstanding expertise has been used to create Mardome Sunlight and Mardome Sunlight Flex, innovative tubular rooflight ranges which combine high levels of light transmission with simple installation technique. Mardome Sunlight features a rigid tunnel with an angled adaptor whereas flexible tubing is a key component of the Sunlight Flex option. The design of the Mardome Sunlight range allows completion of all exterior work before moving inside, facilitating faster installation and minimising disruption to homes and businesses. After the opening is created the roof plate is installed and dressed into the roof, followed by insertion of the Sunlight Reflector roof section and final installation of the dome, completing the exterior work and allowing work to begin inside.



A discreet dome on the roof gives little indication of the dramatic effect internally, transforming dark areas, largely dependent on artificial light into bright attractive spaces. The Sunlight Reflector ensures minimum loss of light between the dome on the roof and the diffuser in the room.

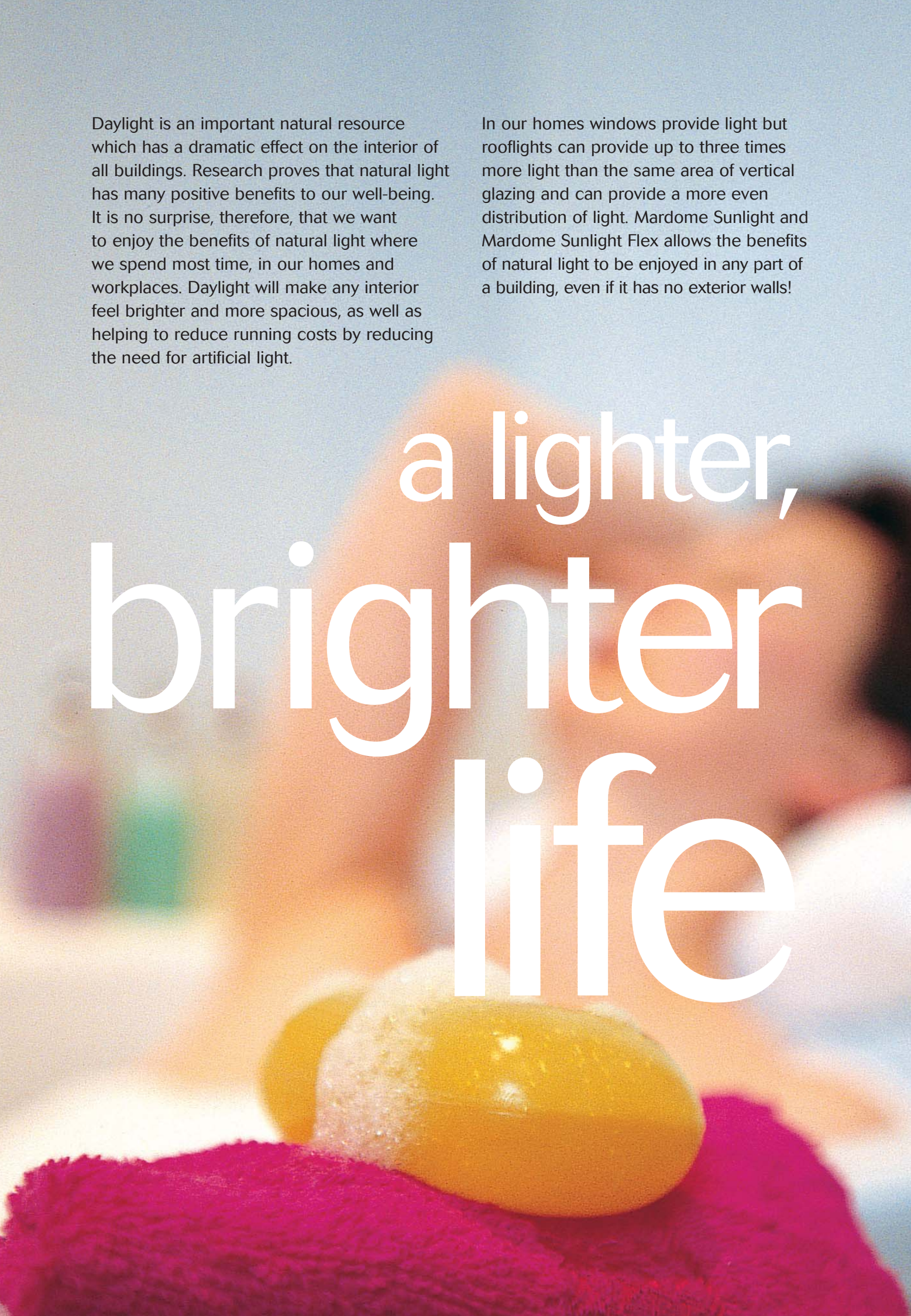
### mardome sunlight OPTICAL PROPERTIES

PROPERTY	TEST METHOD	PERFORMANCE
Sunlight Dome Light Transmission	-	90%
Sunlight Reflector Total Reflection	DIN 5036-3	95%
Sunlight Reflector Diffuse Reflection	DIN 5036-3	<12%
Brightness - along	ISO 7688	89%
Brightness - across	ISO 7688	88%
Image Clarity	ASTM E-430	95%

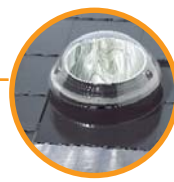
Mardome Sunlight has a maximum distance of 6m from dome to diffuser so can be used to bring light to the ground floor of a two or three storey building.

Daylight is an important natural resource which has a dramatic effect on the interior of all buildings. Research proves that natural light has many positive benefits to our well-being. It is no surprise, therefore, that we want to enjoy the benefits of natural light where we spend most time, in our homes and workplaces. Daylight will make any interior feel brighter and more spacious, as well as helping to reduce running costs by reducing the need for artificial light.

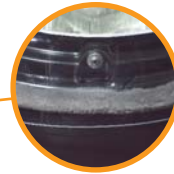
In our homes windows provide light but rooflights can provide up to three times more light than the same area of vertical glazing and can provide a more even distribution of light. Mardome Sunlight and Mardome Sunlight Flex allows the benefits of natural light to be enjoyed in any part of a building, even if it has no exterior walls!



a lighter,  
brighter  
life



The Sunlight Reflector roof section is installed from the roof before the dome is fitted, it features a factory engineered rim for simple yet secure positioning.



Brushed nylon gasket provides a draught, dirt and insect proof seal whilst allowing any moisture within the dome to escape.



The interior of the Sunlight Reflector has a reflection level of 95%, maximising the light entering the room. A film protects the highly polished surface until it is installed.



The angle adaptor, available in 0 - 30° or 0 - 45° versions, provides flexibility in positioning both the dome on the roof and the diffuser in the ceiling. It has the same polished internal finish as the other reflector elements. For maximum light transmission the Sunlight Reflector should be kept as straight as possible.



A neat diffuser allows the light to enter the room discretely.

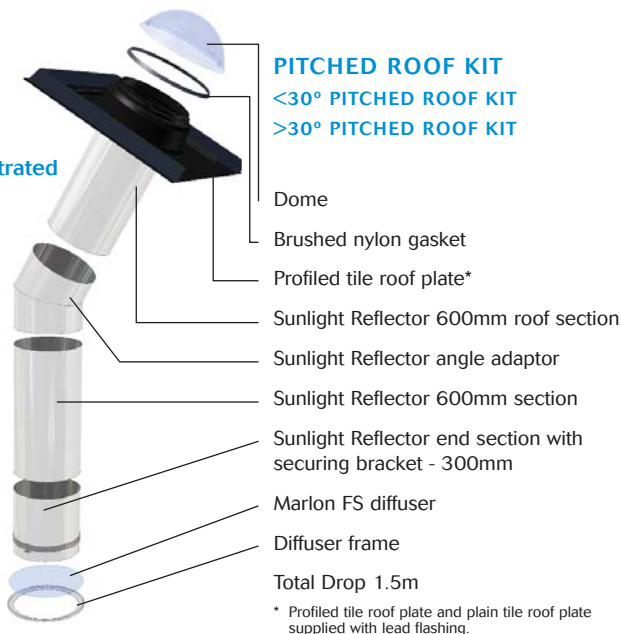


## Mardome Sunlight, designed for fast, hassle free installation and maximum light transmission.

The dome is formed from Marlon FSX Longlife polycarbonate sheet with double sided UV protection. It has an impact resistance 200 times that of glass and a light transmission of 90%. The dome shape, protruding out of the roof, collects the maximum amount of light possible.

The roof plate has been designed for simple trouble free installation. It is available in four options, allowing neat incorporation with the roof finish.

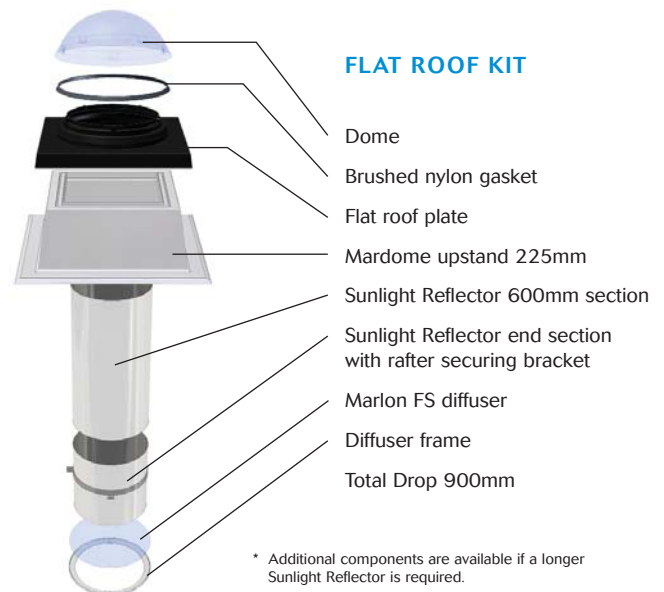
- Plain Tile
- Profiled Tile
- Slate - as illustrated
- Flat Roof

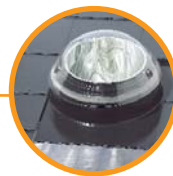


### AVAILABLE IN 3 DIAMETERS

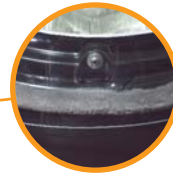
The size you require depends on the amount of light you want.

12"/305mm	Ideal for a smaller windowless bathroom, shower room or large built-in wardrobe, or for adding additional light in dull rooms
14"/355mm	Can be used to light medium size spaces, large landings and halls or the dark end of a long room
21"/535mm	Suitable for commercial situations or to create a very bright living area

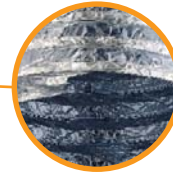




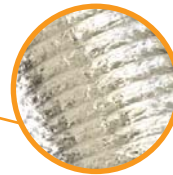
The Sunlight Reflector roof section is installed from the roof before the dome is fitted, it features a factory engineered rim for simple yet secure positioning.



Brushed nylon gasket provides a draft, dirt and insect proof seal whilst allowing any moisture within the dome to escape.



Reflective inner surface.



The flexible tubing bends in any direction and allows access to difficult to reach areas, it is not only easy to fit but cuts installation time.



A neat diffuser allows the light to enter the room discretely.



## Mardome Sunlight Flex, designed for quick, simple installation to allow natural light into difficult to reach areas.

Mardome Sunlight Flex features a flexible tubing which bends easily offering the perfect solution for allowing additional natural light into rooms such as windowless bathrooms, corridors and cupboards. The flexible tunnel eliminates the need for elbows or extensions and is an efficient and economical means of providing natural light in difficult to reach areas. Mardome Sunlight Flex is simple to install at various roof pitch angles.

Three options are available:

- Plain Tile
- Profiled Tile
- Slate - as illustrated

### AVAILABLE IN 2 DIAMETERS

The size you require depends on the amount of light you want.

12"/305mm	Ideal for smaller windowless bathroom, shower room or large built-in wardrobe, or for adding additional light in dull rooms
14"/355mm	Can be used to light medium size spaces, large landings and halls or the dark end of a long room

Maximum transmission - 3m



### PITCHED ROOF KIT

- Dome
- Brushed nylon gasket
- Profiled tile roof plate\*
- Flex duct clip
- Top reflector section
- Flexible tubing - maximum extended length 3m
- Sunlight reflector base section with rafter securing bracket
- Marlon FS diffuser
- Diffuser frame

\* Profiled tile roof plate and plain tile roof plate supplied with lead flashing.



Features	< 30° Pitched Roof Kit 12"/305mm, 14"/355mm or 21"/535mm			> 30° Pitched Roof Kit 12"/305mm, 14"/355mm or 21"/535mm			Flat Roof Kit 12"/305mm, 14"/355mm or 21"/535mm
	Plain Tile	Slate	Profiled Roof Tile	Plain Tile	Slate	Profiled Roof Tile	
Dome	✓	✓	✓	✓	✓	✓	✓
Plain tile roof plate	✓	–	–	✓	–	–	–
Slate roof plate	–	✓	–	–	✓	–	–
Profiled roof plate	–	–	✓	–	–	✓	–
Flat roof plate	–	–	–	–	–	–	✓
Lead flashing strip	✓	–	✓	✓	–	✓	–
Brushed nylon gasket	✓	✓	✓	✓	✓	✓	✓
600mm Sunlight Reflector roof section	✓	✓	✓	✓	✓	✓	✓
0-30° Sunlight Reflector angle adaptor	✓	✓	✓	–	–	–	–
0-45° Sunlight Reflector angle adaptor	–	–	–	✓	✓	✓	–
600mm Sunlight Reflector section	✓	✓	✓	✓	✓	✓	–
Sunlight Reflector end section	✓	✓	✓	✓	✓	✓	✓
Mardome upstand	–	–	–	–	–	–	✓
Securing bracket	✓	✓	✓	✓	✓	✓	✓
Diffuser	✓	✓	✓	✓	✓	✓	✓
Diffuser frame	✓	✓	✓	✓	✓	✓	✓

Please specify diameter required when ordering.

#### ADDITIONAL COMPONENTS

- 600mm Sunlight Reflector section
- 300mm Sunlight Reflector section
- 0-30° Sunlight Reflector angle adaptor
- 0-45° Sunlight Reflector angle adaptor
- Flat roof plate
- Pitched roof plate
- Light brown diffuser frame
- Dark brown diffuser frame



Mardome Sunlight and Mardome Sunlight Flex comes complete with the reassurance of a 20 year limited warranty. A copy of the warranty is available on request.



Features	Pitched Roof Kit 12"/305mm, 14"/355mm		
	Plain Tile	Slate	Profiled
Dome	✓	✓	✓
Plain tile roof plate	✓	–	–
Slate roof plate	–	✓	–
Profiled roof plate	–	–	✓
Lead flashing strip	✓	–	✓
Brushed nylon gasket	✓	✓	✓
600mm Top Rigid tube section	✓	✓	✓
Flexible Sunlight Flex tube	✓	✓	✓
Sunlight Reflector base section	✓	✓	✓
Securing bracket	✓	✓	✓
Diffuser	✓	✓	✓
Diffuser Frame	✓	✓	✓
Sunlight Flex duct clip	✓	✓	✓

Please specify diameter required when ordering.

#### ADDITIONAL COMPONENTS

- Light brown diffuser frame
- Dark brown diffuser frame



Daylight Systems

**UK and Ireland Sales Enquiries**  
**Brett Martin Daylight Systems Ltd,**  
**Sandford Close,**  
**Aldermans Green Industrial Estate,**  
**Coventry, West Midlands CV2 2QU**

Tel: +44 (0) 24 7660 2022  
 Fax: +44 (0) 24 7660 2745  
 Email: [daylight@brettmartin.com](mailto:daylight@brettmartin.com)

FOR THE LATEST INFORMATION  
 VISIT THE COMPANY'S WEBSITE:  
[www.brettmartin.com](http://www.brettmartin.com)

All reasonable care has been taken in the compilation of the information contained within this literature. All recommendations on the use of our products are made without guarantee as conditions of use are beyond the control of Brett Martin. It is the customers responsibility to ensure that the product is fit for its intended purpose and that the actual conditions of use are suitable. Brett Martin pursues a policy of continuous product development and reserves the right to amend specifications without prior notice.